

# Coronavirus Disease 2019 (COVID-19)

## Symptoms of Coronavirus



Older adults and people who have severe underlying medical conditions like heart or lung disease or diabetes seem to be at higher risk for developing more serious complications from COVID-19 illness.



### Coronavirus Self-Checker

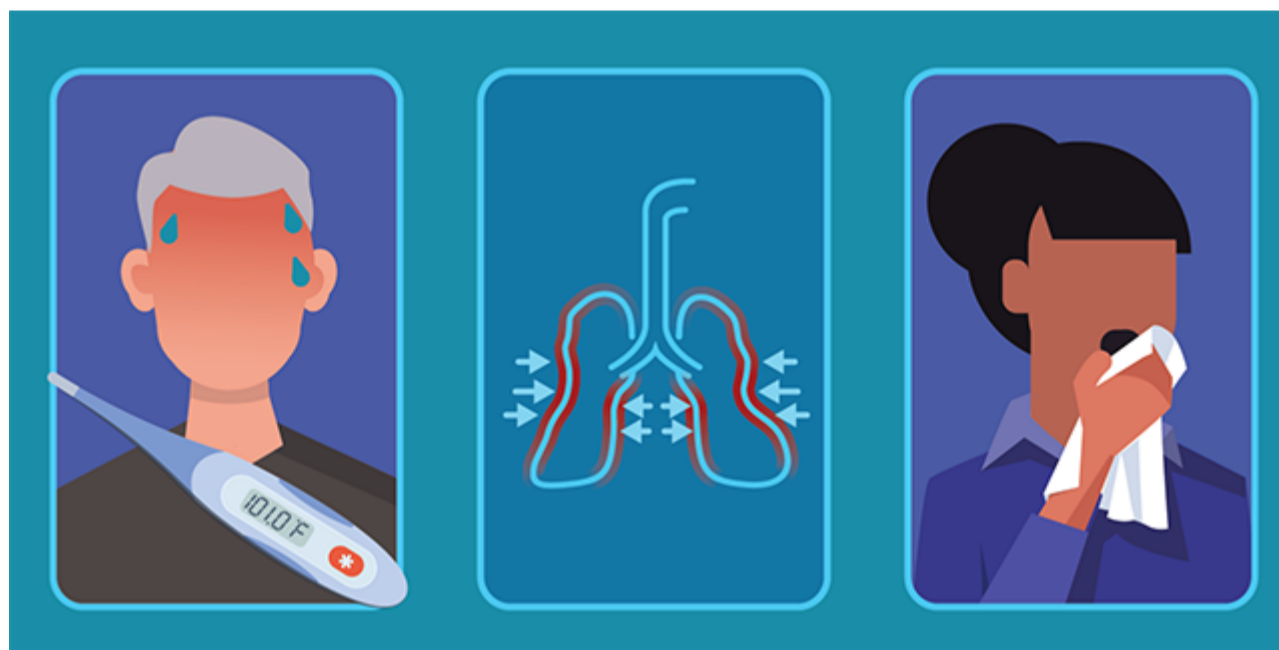
A guide to help you make decisions and see appropriate medical care

## Watch for symptoms

Reported illnesses have ranged from mild symptoms to severe illness and death for confirmed coronavirus disease 2019 (COVID-19) cases.

These symptoms may appear **2-14 days after exposure** (based on the incubation period of MERS-CoV viruses).

- Fever
- Cough
- Shortness of breath



## When to Seek Medical Attention

If you develop **emergency warning signs** for COVID-19 get **medical attention immediately**. Emergency warning signs include\*:

- Trouble breathing
- Persistent pain or pressure in the chest
- New confusion or inability to arouse
- Bluish lips or face

\*This list is not all inclusive. Please consult your medical provider for any other symptoms that are severe or concerning.

# Caring for yourself or others

- [Learn how to protect yourself](#)
- [How to care for someone who is sick](#)
- [What to do if you are sick](#)

## More Information

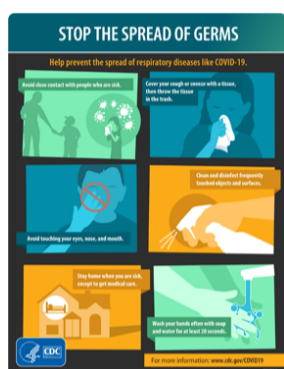
[Older Adults](#)

[Travelers](#)

[People at Higher Risk for Severe Illness](#)

[Healthcare Professionals](#)

## Printable Flyers



### Stop the spread of germs

- [English](#) [1 page]
- [Spanish](#) [1 page]
- [Chinese](#) [1 page]
- [Korean](#) [1 page]
- [Vietnamese](#) [1 page]



### If you are sick

- [English](#) [1 page]
- [Spanish](#) [1 page]
- [Chinese](#) [1 page]
- [Korean](#) [1 page]
- [Vietnamese](#) [1 page]

## Symptoms of Coronavirus 2019

## Symptoms of Coronavirus 2019-ASL

Page last reviewed: March 20, 2020